

TECHNICAL DATA SHEET

Trikol CF

ACRYLIC FLEXIBLE CRACK FILLER

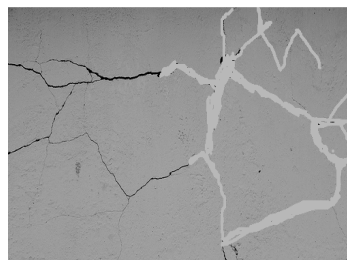
Description

Trikol CF is high quality one part water based acrylic sealant. Kanfill exhibits good adhesion to a wide variety of common construction substrates without the need of a primer.

Main Applications

Trikol CF is use in internal low movement joints,

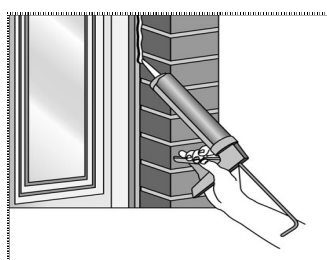
- joints around window
- door frames,
- skirting boards,
- Walls and ceilings.
- External and internal crack filler



External Crack



Door Frame



Joints around Window



Skirting Boards

FEATURES AND BENEFITS

- Paintable crack filler
- Premium Quality
- Excellent adhesion
- Non-staining

Technical Data

Skin Time at 20° C/65 % RH	5mins
Application Temperature:	+ 5° C to + 40° C
Service Temperature:	- 10° C to + 70° C
Cure Rate at 20° C/65 % RH:	Dependent upon sealant depth, ambient temperature and humidity
Chemical Resistance:	Fair resistance to most dilutes acids and alkalis. Poor resistance to organic solvent
Service Life:	15 years+
Paintability:	Paintable with water based paints 3 hours after application Paintable with gloss paints 12 hours after application

Movement Accommodation:

Butt joints (movement in tension and compression): 5 %.

Lap joints (movement in shear): 10 %.

Colour

White, other available on request.

TECHNICAL DATA SHEET

Application Instructions

Joint preparation

The joint surfaces must be clean, dry and free from all contamination. Where applicable, appropriate joint filler e.g. closed cell polyethylene foam, should be used to provide the correct joint depth.

Joint Size Suitability

Joint Width

Minimum 6mm

Maximum 20mm (single application);

Joint Depth

Minimum 10mm on porous substrates

Minimum 6mm on non-porous substrates

Maximum 10mm

Width: Depth ratio

(within above min/max restrictions):

1:1

Packaging

1) 1KG, 5KG, 20KG AND 310ml cartridges

Storage Life

12 months in original unopened packaging stored in a cool, dry place out of direct sunlight.

Health and Safety

No particular hazards with this product but please consult Material Safety Data Sheet for full information.

Quantity Estimator

Joint Size (mm) Metres/kg

6 x 6 17

9 x 6 11

12 x 6 8

18 x 10 3.5

25 x 10 2.5

Health and Safety

Ensure that protective gloves, overalls and protective footwear are worn at all times when handling the material. Avoid skin contact. Should the material come in contact with the skin it may be removed with soap and warm water. If discomfort continues, seek medical advice. If product comes in to contact with eyes, rinse with plenty of fresh water and seek medical advice.

Storage and Shelf life

Store under cover, out of direct sunlight and protect from extremes of temperature. In tropical climates the product must be stored in an air-conditioned environment.

Shelf life is 12 months when stored as above.

Technical Support

Tri Polarcon provides technical advisory service supported by terms of specialist in the field



Disclaimer

The Company's Products are sold subject to the Company's Standard Terms and Conditions of Sale. Products are warranted against defective materials and workmanship. The Company makes every effort to ensure that all the information, recommendations or the specifications provided by it are accurate and true. However as the Company has no control over the conditions of use, it cannot accept any liability, either directly or indirectly regarding the usage of its products. Product specifications are subject to change without prior intimation to users as the products are being continuously upgraded.

TRI POLARCON PVT. LTD.

Mfg of epoxy floor coatings, Sealants, Waterproofing chemicals & Construction Chemicals.

Survey No. 38/1, Rajlaxmi Industrial Estate, Narhe, Pune-411041.

Contact No. 9970633366/9822167282/9049800090.
www.tripolarcon.com/Email: tripolarcon@gmail.com